



Stepney Way, London, E1

BUTLER & STAG



Guide Price - £300,000 to £325,000

This stylish one-bedroom apartment is perfectly located on Stepney Way, just moments from Stepney Green station and the vibrant amenities of East London.



Leasehold

- One Bed Apartment
- Private Balcony
- Lift Access
- Chain Free
- Close To Amenities
- EWS1 Compliant

The property features a bright and airy open-plan living area with floor-to-ceiling windows, leading directly onto a private balcony – ideal for relaxing or entertaining. The contemporary kitchen comes fully fitted with modern appliances and ample storage.

The spacious double bedroom benefits from excellent natural light and built-in wardrobe space, while the sleek bathroom is finished to a high standard with quality fixtures.

Additional features include:

- Secure entry system
- Excellent transport links (Stepney Green, Whitechapel & Mile End nearby)
- Easy access to local shops, restaurants, and green spaces

Perfect for professionals or couples seeking a modern home in a well-connected part of London.





Stepney Way

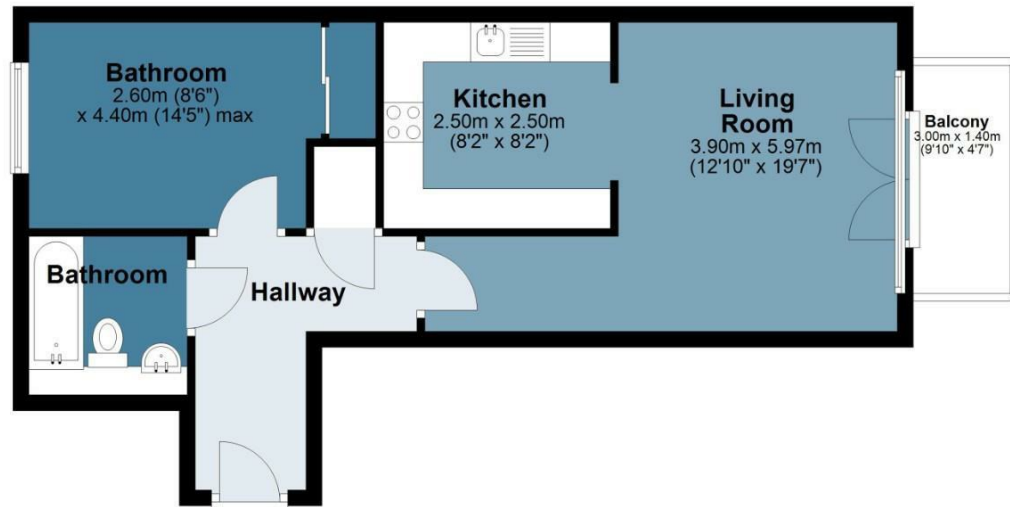
Approx. Gross Internal Area 46.7 Sq M (503 Sq Ft)

BUTLER & STAG



Second Floor

Approx. 46.7 sq. metres (503.0 sq. feet)



Measurements are approximate and for illustration purposes only. While we do not doubt the accuracy and completeness, we advise you conduct a careful independent assessment of the property to determine monetary value.
© @modephoto.uk www.modephoto.co.uk

BUTLER & STAG

☎ 020 8102 1236

🏠 508 Roman Road, Bow, London, E3 5LU

✉ bow@butlerandstag.com

www.butlerandstag.uk

IMPORTANT NOTICE - These particulars have been prepared in good faith and they are not intended to constitute part of an offer or contract. We have not performed a structural survey on this property and the services, appliances and specific fittings have not been tested. All photographs, measurements, floor plans and distances referred to are given as a guide and should not be relied upon.